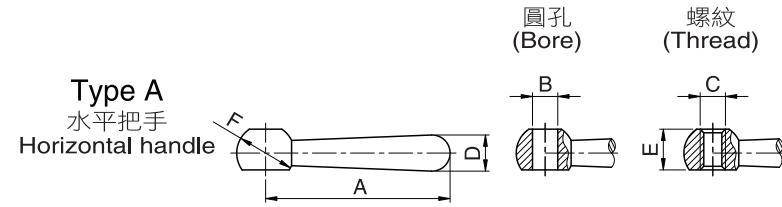
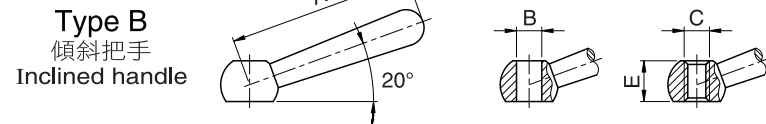


# 夾持控制桿把手 Clamping Levers

# 5010



名稱 Name	材質 Material	表面處理 Surfaced process
把手 Handle	鐵 Steel (ST)	鍍霧銀 Matt silver (EL)

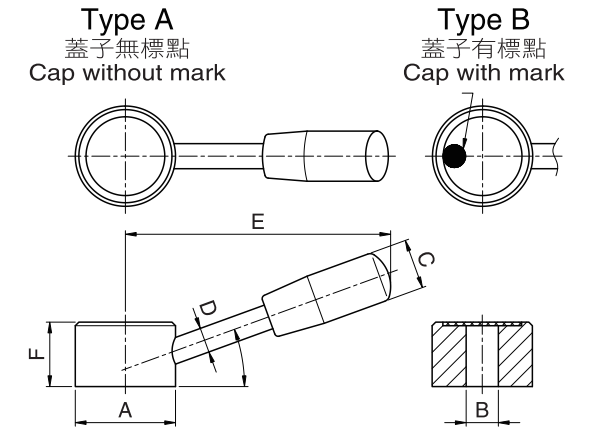


( mm )

Order No. Type A		Order No. Type B		A	B	C	D	E	F
圓孔 (Bore)	螺紋 (Thread)	圓孔 (Bore)	螺紋 (Thread)						
5010 - 50 - B 6	5010 - 50 - M 6	5011 - 50 - B 6	5011 - 50 - M 6	50	6	M6	8	9.5	12
- 63 - B 8	- 63 - M 8	- 63 - B 8	- 63 - M 8	63	8	M8	10	12	16
- 80 - B10	- 80 - M10	- 80 - B10	- 80 - M10	80	10	M10	13	14.5	20
- 100 - B12	- 100 - M12	- 100 - B12	- 100 - M12	100	12	M12	16	18.5	25
- 125 - B16	- 125 - M16	- 125 - B16	- 125 - M16	125	16	M16	20	24	32
- 160 - B20	- 160 - M20	- 160 - B20	- 160 - M20	160	20	M20	25	30	40
- 200 - B24	- 200 - M24	- 200 - B24	- 200 - M24	200	24	M24	32	40	50

# 控制把手 Control Levers

# 5030



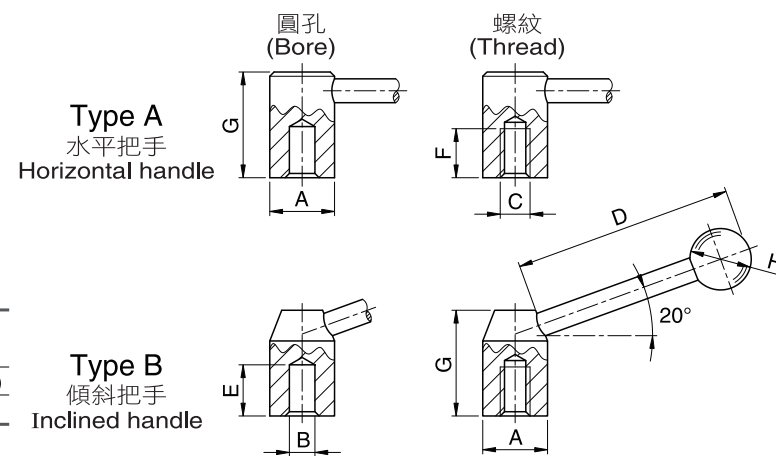
名稱 Name	材質 Material	表面處理 Surfaced process
本體 Basic structure	鐵 Steel (ST)	染黑 Dyed black (DB)
把手 Handle	電木 Bakelite (KU)	黑色 Black (BK)
蓋子 Cap	鋁合金 Aluminum (AL)	銀色 Matt silver (EL)
軸 Spindle	鐵 Steel (ST)	黑色 Black (BK)

( mm )

Order No. 無標註 Type A	Order No. 有標註 Type B	A	B	C	D	E	F
5030 - 32 - B10	5031 - 32 - B10	32	B10	18	8	84	21
- 40 - B10	- 40 - B10	40	B10	21	9	106	25
- 50 - B14	- 50 - B14	50	B14	23	11	130	28
- 50 - B16	- 50 - B16	50	B16	23	11	130	28

# 夾持迫緊控制桿把手 Tension Levers

# 5020



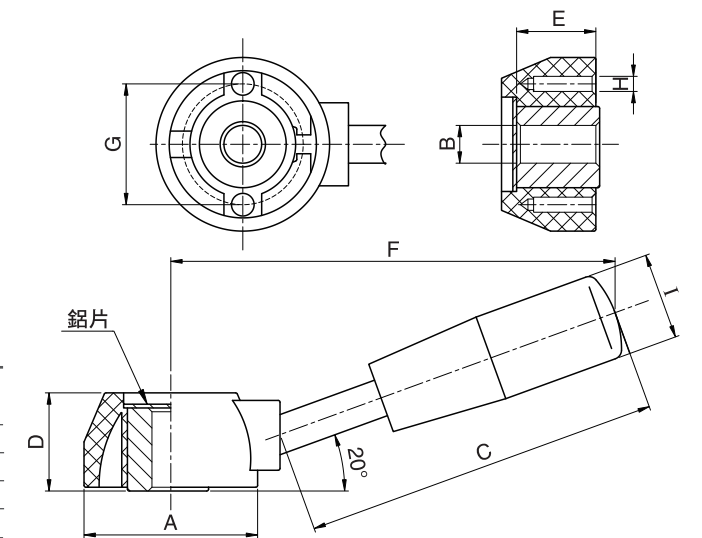
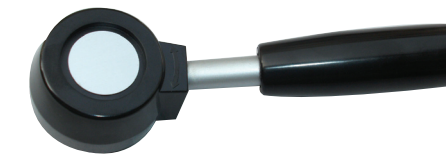
名稱 Name	材質 Material	表面處理 Surfaced process
把手 Handle	鐵 Steel (ST)	染黑 Dyed black (DB)
旋鈕 Knob	電木 Bakelite (KU)	黑色 Black (BK)

( mm )

Order No. Type A		Order No. Type B		A	B	C	D	E	F	G	H
圓孔 (Bore)	螺紋 (Thread)	圓孔 (Bore)	螺紋 (Thread)								
5020 - 20 - B 8	5020 - 20 - M 8	5021 - 20 - B 8	5021 - 20 - M 8	20	8	M8	70	17	15	33	20
- 22 - B10	- 22 - M10	- 22 - B10	- 22 - M10	22	10	M10	82	19	15	37	20
- 25 - B12	- 25 - M12	- 25 - B12	- 25 - M12	25	12	M12	96	21	18	42	25
- 28 - B12	- 28 - M12	- 28 - B12	- 28 - M12	28	12	M12	110	23	18	47	30
- 32 - B16	- 32 - M16	- 32 - B16	- 32 - M16	32	16	M16	124	25	23	52	32
- 36 - B16	- 36 - M16	- 36 - B16	- 36 - M16	36	16	M16	138	27	24	58	35
- 40 - B20	- 40 - M20	- 40 - B20	- 40 - M20	40	20	M20	152	29	27	64	40
- 45 - B20	- 45 - M20	- 45 - B20	- 45 - M20	45	20	M20	170	31	30	71	40

# 電木控制把手 Bakelite Control Levers

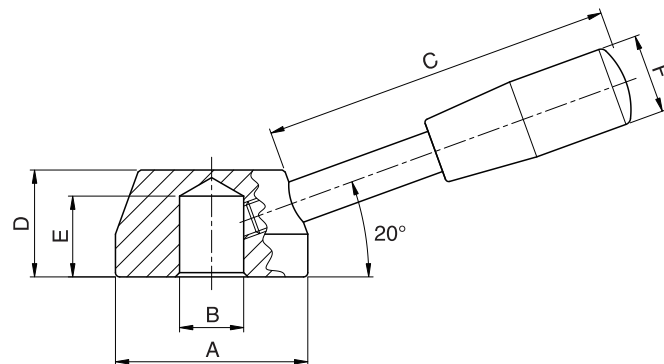
# 5035



名稱 Name	材質 Material	表面處理 Surfaced process
本體 Basic structure	鐵 Steel (ST)	染黑 Dyed black (DB)
把手 Handle	電木 Bakelite (KU)	黑色 Black (BK)
	鐵 Steel (ST)	鍍霧銀 Matt silver (EL)
	電木 Bakelite (KU)	黑色 Black (BK)

( mm )

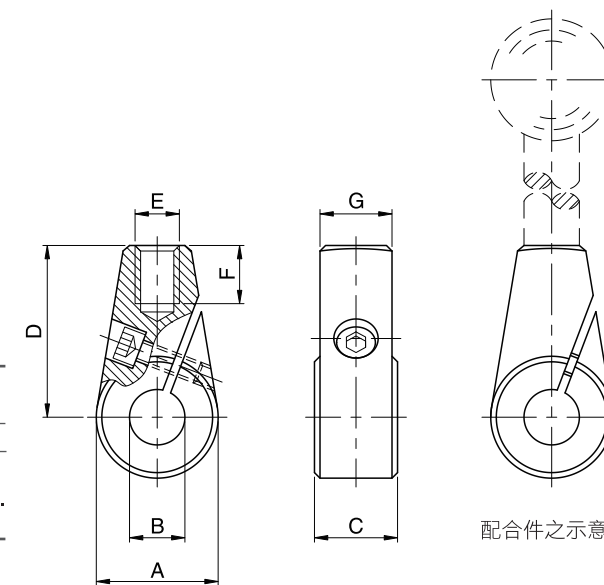
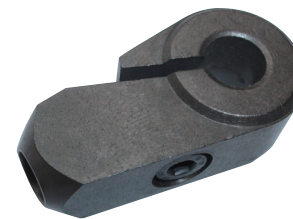
Order No. 電木 (KU)	A	B	C	D	E	F	G	H	I
5035 - 46 - B12	46	12	93	25	22	120	32	6	23
- 55 - B12	55	12	108	30	27	140	40	8	26



名稱 Name	材質 Material	表面處理 Surfaced process
本體 Basic structure	鐵 Steel (ST)	鍍霧銀 Matt silver (EL)
把手 Handle	鐵 Steel (ST)	鍍霧銀 Matt silver (EL)
	電木 Bakelite (KU)	黑色 Black (BK)

( mm )

Order No. 鐵 (ST)	A	B	C	D	E	F
5051 - 40 - B10	40	B10	98	22	14	21
- 45 - B12	45	B12	123	25	16	21
- 50 - B12	50	B12	123	26	18	23
- 54 - B14	54	B14	158	30	20	23
- 60 - B16	60	B16	158	32	21	26
- 70 - B18	70	B18	198	32	21	26
- 80 - B22	80	B22	198	36	24	28



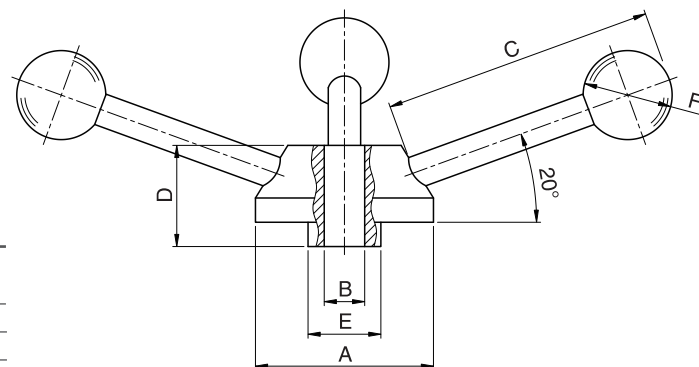
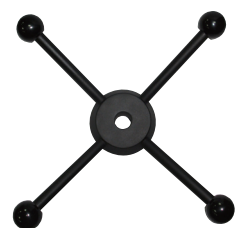
名稱 Name	材質 Material	表面處理 Surfaced process
調整座 Split hub	鐵 Steel (ST)	黑色 Black (BK)
備註 Remark	配合型號1160之把手，規格尺寸任選。 With Model 1160 dimension in the list is optional.	

( mm )

Order No. 鐵 (ST)	A	B	C	D	E	F	G
5070 - 24 - 36	24	B12	15.5	36	M8	11	13
- 28 - 41	28	B14	17.5	41	M10	14	15
- 32 - 45	32	B16	19.5	45	M12	16	17

**砲塔式把手**  
**Turret Levers**

**5060**



名稱 Name	材質 Material	表面處理 Surfaced process
本體 Basic structure	鐵 Steel (ST)	黑色 Black (BK)
把手 Handle	鐵 Steel (ST)	黑色 Black (BK)
	電木 Bakelite (KU)	黑色 Black (BK)

( mm )

Order No. 鐵 (ST)	A	B	C	D	E	F
5060 - 50 - B12	50	B12	82	26	28	20
- 55 - B14	55	B14	96	28	30	25
- 60 - B15	60	B15	96	30	32	25
- 65 - B16	65	B16	124	32	35	30
- 72 - B18	72	B18	124	36	40	32
- 80 - B20	80	B20	138	40	44	35
- 100 - B24	100	B24	170	52	54	40

**Memo**