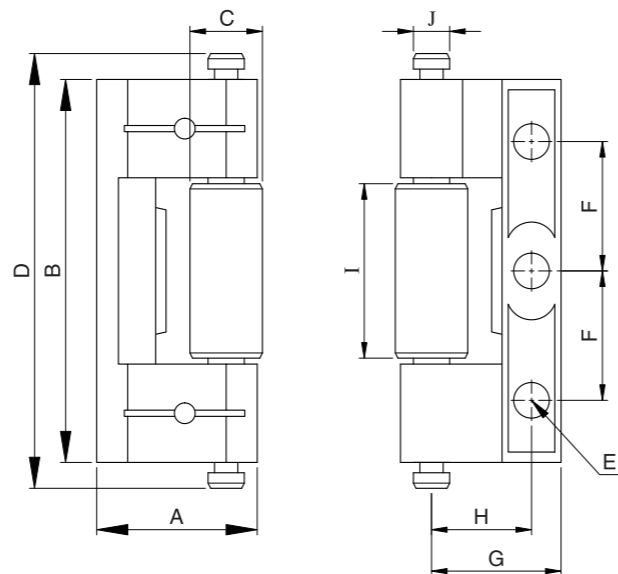


隱藏式鉸鏈 (套筒型)
Concealed Hinge

B010



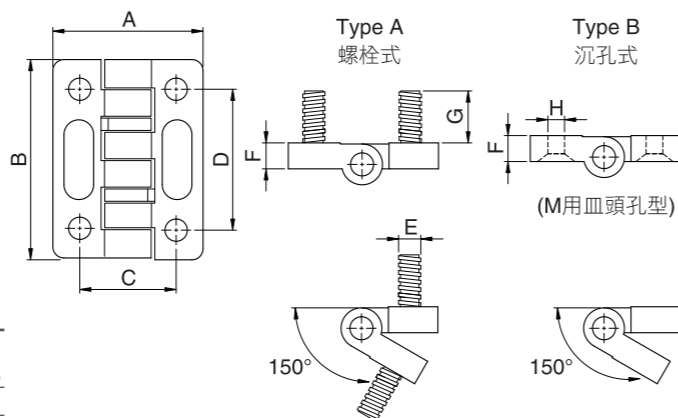
名稱 Name	材質 Material	表面處理 Surfaced process
本體 Basic structure	鋅合金 Zinc alloy	黑色 Black (BK)
軸 Spindle	鐵 Steel (ST)	鍍鋅 Zinced (ZI)
套筒件 Sleeve	鐵 Steel (ST)	

(mm)

Order No. 鋅合金	A	B	C	D	E	F	G	H	I	J
B010 - 31 - 74	31	74	14	84	M6	25	25	19.5	33.7	7

鉸鏈
Torque Hinges

B020



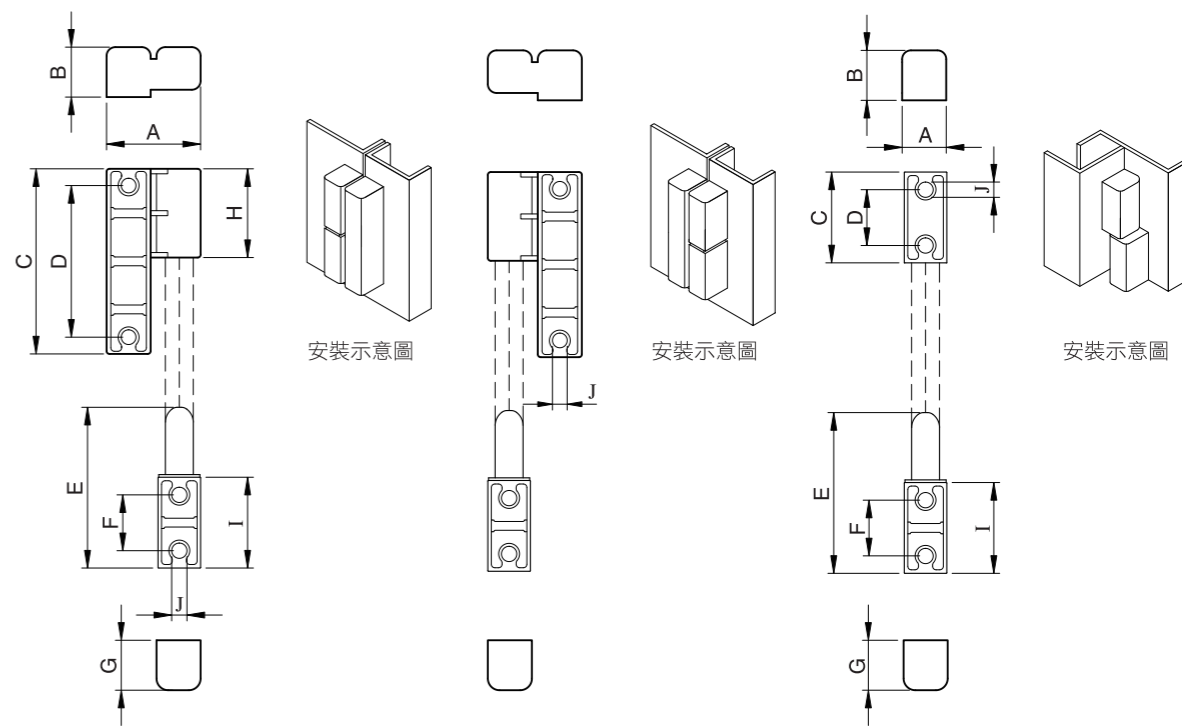
名稱 Name	材質 Material	表面處理 Surfaced process
本體 Basic structure	鋅合金 Zinc alloy	黑色 Black (BK)
軸 Spindle	不銹鋼 Stainless steel (SST)	

(mm)

Order No. Type A	Order No. Type B	A	B	C	D	E	F	G	H	Loading 荷重 (Kg)
B020 - 40 - 1	B021 - 40 - 1	40	54	26	38	M6	7	19	M5	12
- 40 - 2	- 40 - 2	40	54	26	38	M6	7	19	M5	47

拆卸式鉸鏈
Visible Door Removal Hinges

B030



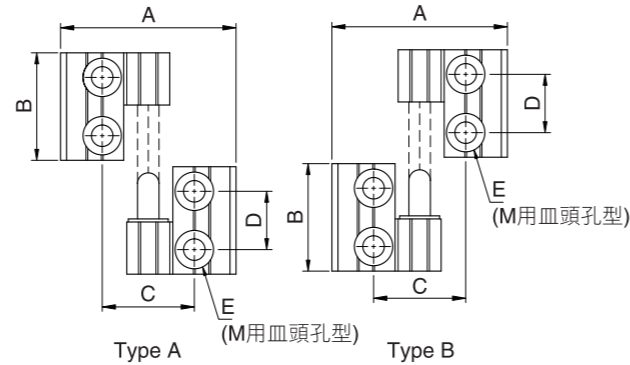
名稱 Name	材質 Material	表面處理 Surfaced process
本體 Basic structure	鋅合金 Zinc alloy	黑色 Black (BK)

(mm)

Order No. 鋅合金	A	B	C	D	E	F	G	H	I	J	
Type A	B030 - 1	32	17	63	50.8	54.5	19	17	30.5	30.9	M5
Type B	- 2	32	17	63	50.8	54.5	19	17	30.5	30.9	M5
Type C	- 3	14.5	17	30.9	19	54.5	19	17	-	30.9	M5

可拆式鋁合金鉸鏈 Detachable Aluminum Hinges

B035



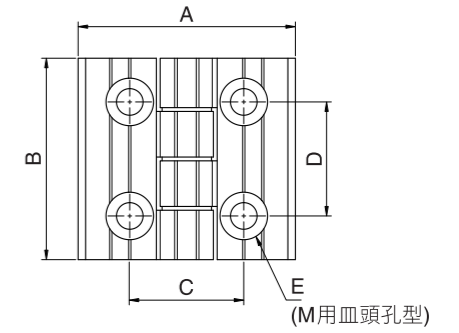
名稱 Name	材質 Material	表面處理 Surfaced process
本體 Basic structure	鋁合金 Aluminum (AL)	黑色 Black (BK)
墊圈 Washer	塑膠 Plastic (KT)	白色 White

(mm)

Order No. Type A	Order No. Type B	A	B	C	D	E	F	G	H	Loading 荷重 (Kg)
B035 - 35 - 30	B036 - 35 - 30	58	35	30	19	M6	5	12	15	30
- 35 - 35	- 35 - 35	58	35	35	19	M6	5	12	15	30
- 35 - 40	- 35 - 40	58	35	40	19	M6	5	12	15	30

鋁合金鉸鏈 Aluminum Hinges

B045



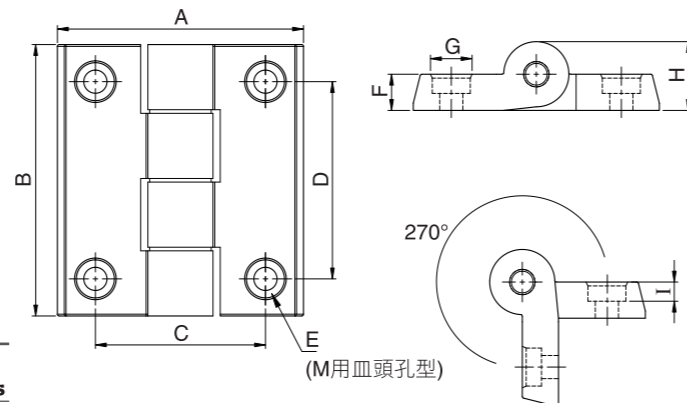
名稱 Name	材質 Material	表面處理 Surfaced process
本體 Basic structure	鋁合金 Aluminum (AL)	黑色 Black (BK)
墊圈 Washer	塑膠 Plastic (KT)	白色 White

(mm)

Order No. 鋁合金	A	B	C	D	E	F	G	H	Loading 荷重 (Kg)
B045 - 53 - 30	58	53	30	30	M6	5	12	15	50
- 53 - 35	58	53	35	30	M6	5	12	15	50
- 53 - 40	58	53	40	30	M6	5	12	15	50

鋁合金鉸鏈 Aluminum Hinges

B040



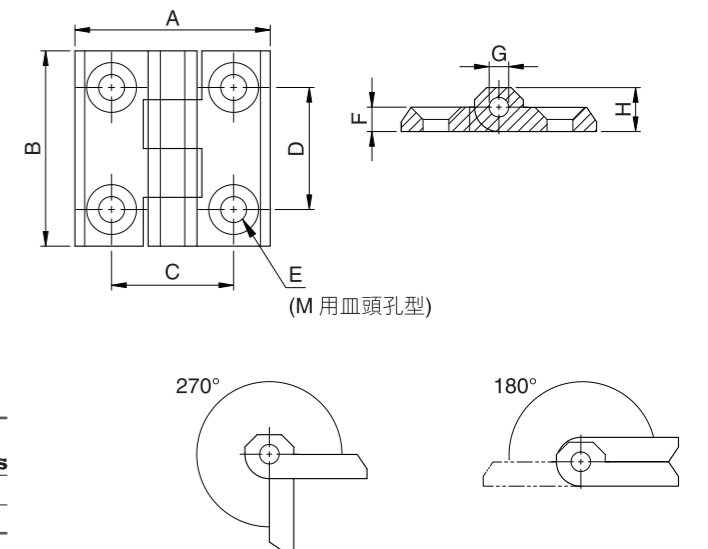
名稱 Name	材質 Material	表面處理 Surfaced process
本體 Basic structure	鋁合金 Aluminum (AL)	黑色 Black (BK)
墊圈 Washer	塑膠 Plastic (KT)	白色 White

(mm)

Order No. 鋁合金	A	B	C	D	E	F	G	H	I	Loading 荷重 (Kg) (2pcs)
B040 - 40 - 50	40	50	26	30	M5	6.5	9	13	4.5	30
- 70 - 50	70	50	47	30	M6	10	10.5	19	6	50
- 70 - 75	70	75	47	54.5	M6	10	10.5	19	6	70

鉸鏈 Hinges

B050



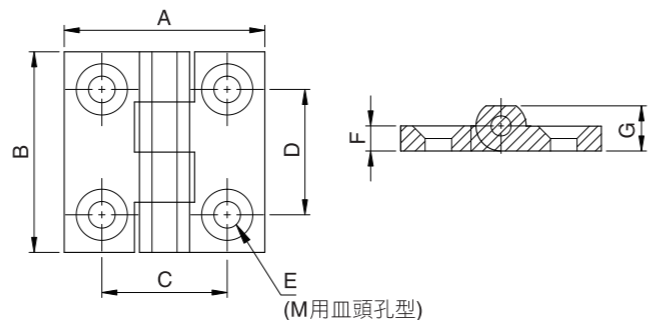
名稱 Name	材質 Material	表面處理 Surfaced process
本體 Basic structure	鋅合金 Zinc alloy	黑色 Black (BK)
軸 Spindle	不銹鋼 Stainless steel (SST)	

(mm)

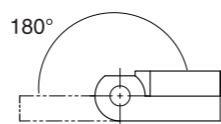
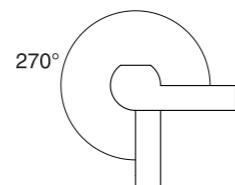
Order No. 鋅合金	A	B	C	D	E	F	G	H	Loading 荷重 (Kg)
B050 - 40 - 40	40	40	25	25	M5	5	4	9	20
- 50 - 50	50	50	30	30	M6	6	6	11.5	30
- 60 - 60	60	60	36	36	M8	8	8	15	40

B055

重承載型不銹鋼鉸鏈 St. Steel Hinges For Heavy-Duty Use



名稱 Name	材質 Material	表面處理 Surfaced process
本體 Basic structure	不銹鋼 Stainless steel (SST)	髮絲面拋光 Hairline buffed
軸 Spindle	不銹鋼 Stainless steel (SST)	

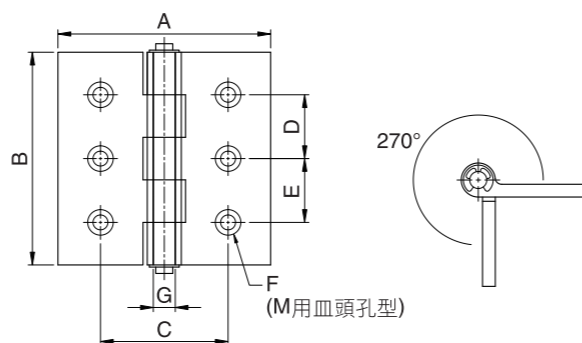
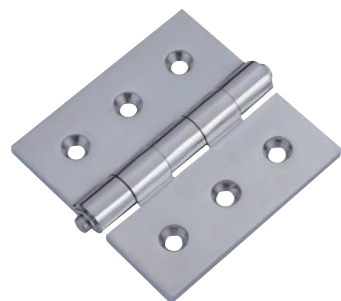


(mm)

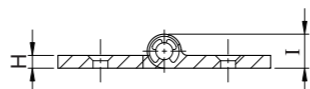
Order No. 不銹鋼 (SST)	A	B	C	D	E	F	G	Loading 荷重 (Kg)
B055 - 40 - 40	40	40	25	25	M5	5	9.5	30
- 50 - 50	50	50	30	30	M6	6	12	40
- 60 - 60	60	60	36	36	M8	8	15.5	60

B060

重承載型不銹鋼鉸鏈 St. Steel Hinges For Heavy-Duty Use



名稱 Name	材質 Material	表面處理 Surfaced process
本體 Basic structure	不銹鋼 Stainless steel (SST)	亮面拋光 Bright polished (BP)
軸 Spindle	不銹鋼 Stainless steel (SST)	



(mm)

Order No. 不銹鋼 (SST)	A	B	C	D	E	F	G	H	I	Loading 荷重 (Kg)
B060 - 50 - 50	50	50	35	20	-	M5	6	5	14	40
- 65 - 65	65	65	40	35	-	M5	6	5	14	50
- 75 - 75	75	75	50	40	-	M6	8	6	16	70
-100-100	100	100	60	30	30	M6	8	6	16	90